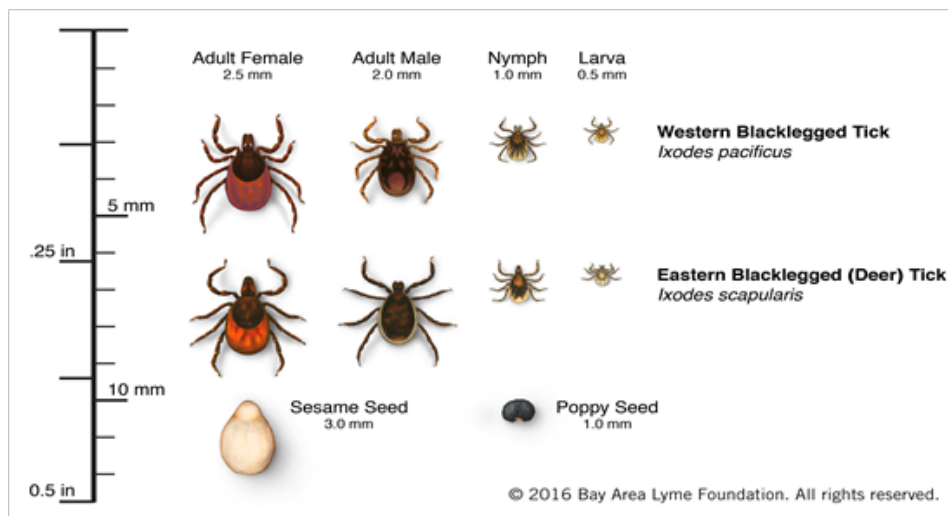


**Lyme disease** bacterium is spread through the bite of infected ticks named the "**blacklegged tick**" (Deer Tick). Ticks can attach to any part of the body but are often found in hard-to-see areas such as the groin, armpits, and scalp. In most cases, the tick must be attached for 36-48 hours or more before the Lyme disease bacterium can be transmitted. Most humans are infected through the bites of immature ticks which are found in brush, woods and tall grass in warm months.

**How to Protect Yourself:** wear a hat, long pants, a long sleeve shirt, and use insect repellants contain **20%-30% DEET** on your skin and clothing. Wash & dry your clothes in a hot dryer to kill any potentially remaining ticks. See a doctor right away if you have these symptoms: **red bulls eye rash, fever/chills, joint & muscle pain, headache, or swollen lymph nodes.**



**the size of the adult deer ticks**



**the red bulls eye mark they can leave on your skin after a bite**