

June 29, 2020

EMAIL YOUR SIGN-IN SHEET IN TO THE OFFICE AFTER THE MEETING

Project Number#	Job Name:	Person Conducting Meeting:

Lyme Disease

Lyme disease bacterium is spread through the bite of infected ticks named the "**blacklegged tick**" (Deer Tick). Ticks can attach to any part of the body but are often found in hard-to-see areas such as the groin, armpits, and scalp. In most cases, the tick must be attached for 36-48 hours or more before the Lyme disease bacterium can be transmitted. Most humans are infected through the bites of immature ticks usually found in brush, woods and tall grass active in warm months.

How to Protect Yourself: wear a hat, long pants, a long sleeve shirt and use insect repellants containing 20-30% DEET on your skin and clothing. Wash & dry your clothes in a hot dryer to kill any remaining ticks. See a doctor right away if you have any of these symptoms: **red bulls eye rash, fever/chills, headache, joint & muscle pain, or swollen lymph nodes.**

Last week's Bonus Question: How many hands are needed to "Safely" operate a 4" grinder?

Answer: Two Hands

Inspect your equipment (*scaffold, aerial lifts, ladders, fall protection, electrical cords, etc., etc.*) prior to the start of each work shift.

For **inspection packets or repair tags** call **Dave Sangren @ (612) 644-3136** to have some delivered to your jobsite.

Please call Dave if your jobsite is in need of hand sanitizer, bleach cleaner, masks, etc.

Any questions/concerns, please give Sturg a call (612) 221-8603

PLEASE PRINT YOUR NAME

(Foreman review sheet, verify crew members names are **legible**)

Visit our website: www.olympiccompanies.com

Comments:

**** See COVID-19 updates on Olympics' Facebook page, Olympics' website or inside your payroll check ****

Record to beat **378** days!!!

As of **June 25, 2020** we have worked **3** days without a Lost Time Injury.

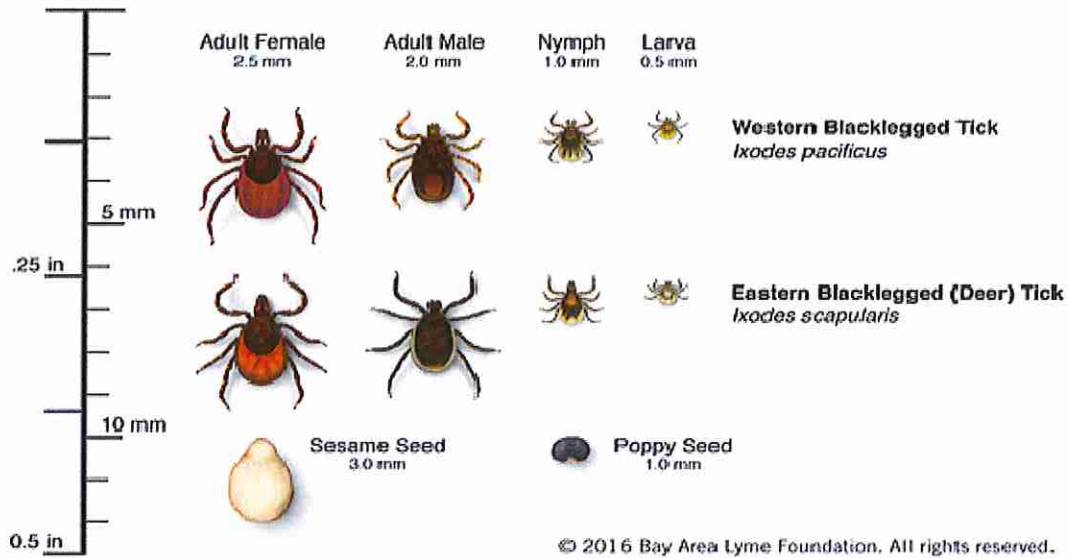
We have safely worked **5,021** hours towards our ATV goal of **150,000** hours!

Toolbox Talks winners for last week: **Rod McKenzie & Alejandro Richardson @ 240 Park & Ryan Smith @ LakeHaus**

This week's Bonus Question: **What are 3 symptoms of Lyme disease?**

Hint: **See Foreman**

The **Blacklegged Tick**, commonly known as the **deer tick**, is widely known as the sole carrier of the bacteria that causes **Lyme Disease**.



the size of the adult deer ticks



the red bulls eye mark they can leave on your skin after a bite